

FNX
Switch-Disconnecter-Fuse Unit

About us



Switchgear Factory, Navi Mumbai



Switchgear Factory, Ahmednagar



Switchgear Factory, Vadodara

L&T Electrical & Automation (E&A) is a market leader for electrical distribution, monitoring and control solutions in the low voltage category.

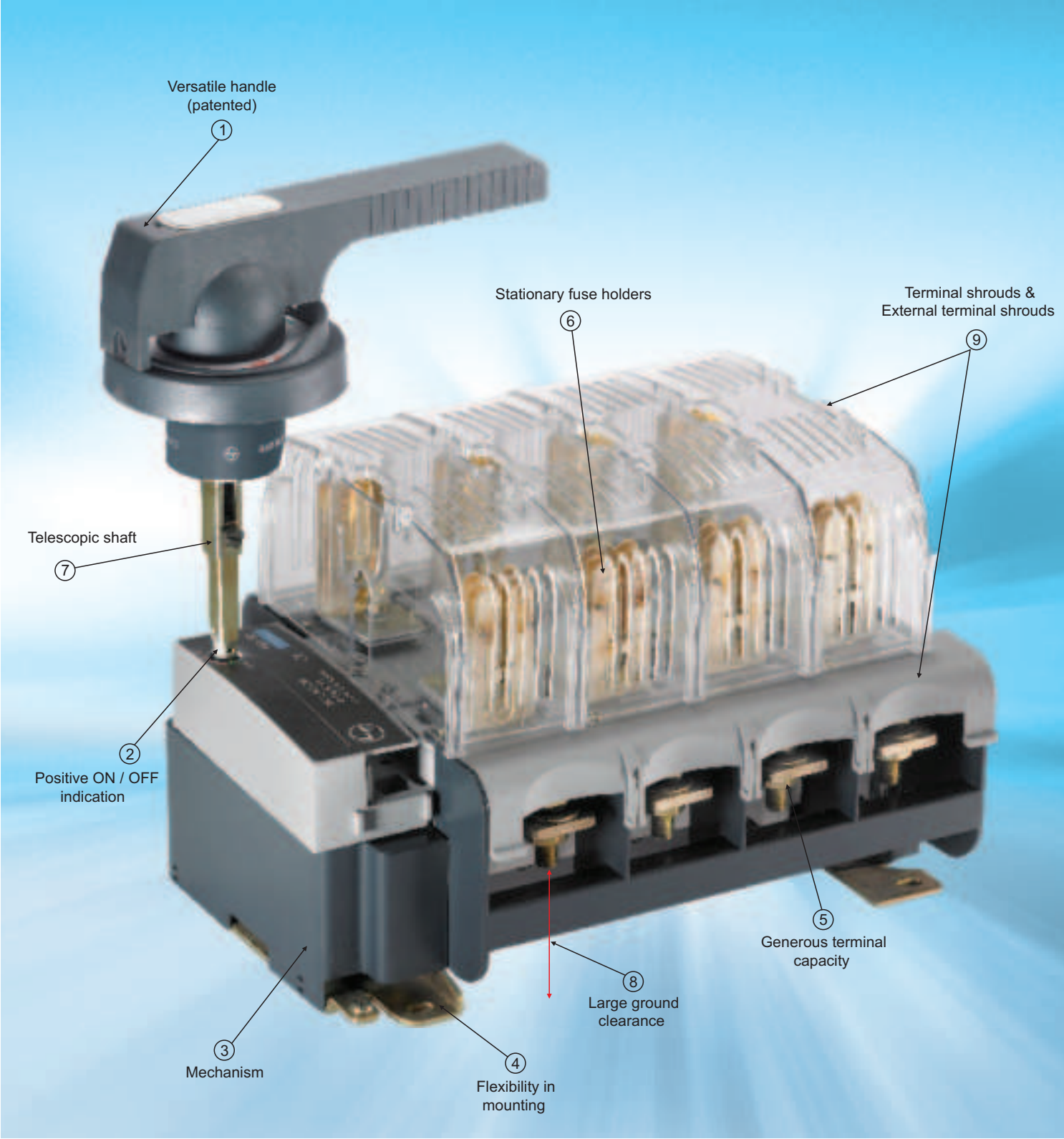
Popular among customers as L&T Switchgear, E&A offers a wide range of low and medium voltage switchgear, motor starters, electrical systems, industrial automation, building electrical solutions, energy management solutions, electrical modernization solutions and metering solutions. Its products and solutions cater to key sectors of economy like industries, utilities, infrastructure, building and agriculture.

E&A's manufacturing operations at Navi Mumbai, Ahmednagar, Vadodara, Coimbatore and Mysuru in India adhere to global practices of excellence and receive support from well-equipped in-house design and development centres as well as tooling facilities that contribute to precision in manufacturing.

Index

| Content | Page No. |
|--------------------------------------|----------|
| Superior Features | 1 |
| FNX SDF Range | 3 |
| Technical Data | 4 |
| Ordering Information | 7 |
| Spares & Accessories | 8 |
| Overall Dimensions | 9 |
| Installation Details | 16 |
| HRC Fuses - Cylindrical | 18 |
| HRC Fuses - Blade / Knife type | 19 |

Superior Features



FNX incorporates state-of-the-art technology and a range with superior design features to deliver key operational advantages.

① **Versatile handle (patented)**

The handle coupling has the following user-friendly features:

- Door interlock (defeatable)
- Padlock with / without door interlock
- Choice of operating quadrant
- Flexibility (± 3 mm mismatch operational quadrant)

② **Positive ON / OFF indication**

Clear ON-OFF indication is provided on the switch by a red pointer.

③ **Mechanism**

The mechanism is front-operated and a quick-make / quick-break one. The contact closing is spring-assisted and is independent of manual speed of operation.

④ **Flexibility in mounting**

The Switch-Disconnect-Fuse unit can be mounted at any angle in a vertical plane.

⑤ **Generous terminal capacity**

Terminals are suitable for Al / Cu links / cable lug connections.

⑥ **Stationary fuse holders**

Fuses remain stationary during switching operation.

⑦ **Telescopic shaft**

Handle depth can be varied and fixed as per requirement during installation. This is possible because the telescopic shaft can be adjusted for stepless variable depth.

⑧ **Large ground clearance**

⑨ **Terminal shrouds & External terminal shrouds**

• **DIN rail mounting**

Ratings upto 125 A can be mounted on 35 mm DIN rail for which the DIN rail mounting is available as an accessory

• **Easy inspection and replacement of contacts**

Contacts can be easily inspected and replaced (if required) during maintenance. This way the electrical life can be equal to its mechanical life

• **Compact size**

Being extremely compact, it results in saving of valuable panel space.

• **Easy to operate**

Low operating torque makes it very convenient to operate

FNX SDF Range

FNX SDF units are available in a wide range :



| Frames | Ratings |
|--------|--------------|
| 1 | 32 A, 63 A |
| 2 | 100 A, 125 A |
| 3 | 125 A, 160 A |
| 4 | 200 A, 250 A |
| 5 | 315 A, 400 A |
| 6 | 630 A, 800 A |

| Versions |
|------------------|
| 3 Pole |
| 3 Pole + Neutral |
| 4 Pole |

Advantages

The FNX SDF range provides users with a high level of safety. The complete range conforms to IS13947 (Part 3) / IEC60947-3 standards. It also carries the CE marking signifying compliance to stringent European safety norms.

FNX SDF's superior features translate into better safety for the users.

Fuse shrouds / Terminal shrouds provide protection against accidental direct contact. Terminal shrouds also protect against phase to phase short circuit through an external conducting path.

Extended terminal shrouds cover the terminations, including the cable lug and connectors.

Double isolation of fuses when FNX is in OFF position makes replacement of fuses risk-free.

Positive ON / OFF indication ensures that the handle indicates OFF position only when main contacts are actually open.

IP20 protection is provided by using fuse shrouds as standard.

Fuse indicators / fuse monitors provide safe and reliable indications.

Large ground clearance eliminates possibility of phase to ground flash over.

Built-in padlocking arrangement provided to lock the unit in OFF position prevents inadvertent operation of the unit.

Fuse barriers are provided on the Switch-Disconnect-Fuse units as an additional safety feature to eliminate the possibility of inter-phase short circuit.

Fuse puller facilitates safe removal of fuses.

Technical Data

| Frame Size | | Unit | I | I | II | II |
|---|-----------------------------------|-------------|-----------------------------------|---------------|------------|------------|
| Type Designation | | | FNX 32 | FNX 63 | FNX 100 | FNX 125C |
| Conformance to Standard | | | IEC 60947-3, IS/IEC 60947-3 | | | |
| No. of Poles | | | 3 Pole + Isolable Neutral, 4 Pole | | | |
| Thermal Current (I_{th}) at 40°C | | A | 32 | 63 | 100 | 125 |
| Conventional Enclosed Thermal Current (I_{the}) | | A | 32 | 63 | 100 | 125 |
| Ref. Ambient Temperature | | °C | 40 | 40 | 40 | 40 |
| Rated Insulation Voltage (U_i) | | V | 1000 | 1000 | 1000 | 1000 |
| Rated Operational Voltage (U_e) | | V | 415 | 415 | 415 | 415 |
| Rated Impulse withstand Voltage (U_{imp}) | | kV | 8 | 8 | 8 | 8 |
| Dielectric Strength | | kV | 6 | 6 | 6 | 6 |
| Rated Operational Current (I_e) at 415 V | | | | | | |
| AC-21 A Utilization Category | | A | 32 | 63 | 100 | 125 |
| AC-22 A Utilization Category | | A | 32 | 63 | 100 | 125 |
| AC-23 A Utilization Category | | A | 32 | 63 | 100 | 125 |
| Rated Operational Current (I_e) at 690 V (AC-23 A) | | A | 32 | 32 | 80 | - |
| Breaking Capacity - 436 V, AC-23 A | | A (rms) | 256 | 504 | 800 | 1000 |
| Making Capacity - 436 V, AC-23 A | | A (rms) | 320 | 630 | 1000 | 1250 |
| Mechanical Endurance (Number of operating cycles) | | | 20,000 | 20,000 | 15,000 | 15,000 |
| Maximum Torque (On terminal bolt) | | Nm | 4.5 | 4.5 | 4.5 | 4.5 |
| Pollution Degree | | | III | III | III | III |
| Terminal Capacity | Main | Sq. mm | 35 | 35 | 50 | - |
| | Neutral | Sq. mm | 35 | 35 | 50 | - |
| Terminal Width | | | 16 | 16 | 20 | 20.5 |
| Terminal Thickness | | | 1.6 | 1.6 | 3 | 3 |
| Terminal Screw | | mm | M6 x 12 | M6 x 12 | M8 x 20 | M8 x 20 |
| Weight 3-Pole / 4-Pole | | kg | 0.9 | 0.9 | 1.7 | 2.2 |
| Rated Capacitor Power (415 V, 50/60 Hz) | | kVAr | 14 | 29 | 45 | - |
| DC Rating at 220 V DC | | | | | | |
| No. of Poles in Series, Utilization Category at Rated Current | | | 3, DC-23 A | 3, DC-23 A | 3, DC-23 A | 3, DC-23 A |
| Suitable E&A Fuse | | | | | | |
| DIN | Rated Fused Short circuit Current | kA | 80* | 80* | 100 | 100 |
| | Rating | A/Type/Size | 32/HF/14 x 51 | 63/HF/14 x 51 | 100/HN/000 | 125/HN/000 |
| Short circuit making Capacity (I_{cm}) | | A | 320 | 630 | 1000 | 1250 |
| Operating Torque | | Kg-m | 0.4 | 0.4 | 0.4 | 0.4 |
| Auxiliary Contacts no. of NO + NC (Accessories) | | | 2 | 2 | 2 | 2 |
| Overall Dimensions | W | mm | 113 | 113 | 112 | 148 |
| | H | mm | 108 | 108 | 144.5 | 217 |
| | D | mm | 150 + 10 | 150 + 10 | 180 + 10 | 145 |

* Cylindrical Fuse link

Technical Data

| Frame Size | | Unit | III | III | IV | IV |
|---|-----------------------------------|-------------|-----------------------------------|-----------------|------------|------------|
| Type Designation | | | FNX 125 | FNX 160 | FNX 200 | FNX 250 |
| Conformance to Standard | | | IEC 60947-3, IS/IEC 60947-3 | | | |
| No. of Poles | | | 3 Pole + Isolable Neutral, 4 Pole | | | |
| Thermal Current (I_{th}) at 40°C | | A | 125 | 160 | 200 | 250 |
| Conventional Enclosed Thermal Current (I_{the}) | | A | 125 | 160 | 200 | 250 |
| Ref. Ambient Temperature | | °C | 40 | 40 | 40 | 40 |
| Rated Insulation Voltage (U_i) | | V | 1000 | 1000 | 1000 | 1000 |
| Rated Operational Voltage (U_e) | | V | 415 | 415 | 415 | 415 |
| Rated Impulse withstand Voltage (U_{imp}) | | kV | 12 | 12 | 12 | 12 |
| Dielectric Strength | | kV | 10 | 10 | 6 | 6 |
| Rated Operational Current (I_e) at 415 V | | | | | | |
| AC-21 A Utilization Category | | A | 125 | 160 | 200 | 250 |
| AC-22 A Utilization Category | | A | 125 | 160 | 200 | 250 |
| AC-23 A Utilization Category | | A | 125 | 160 | 200 | 250 |
| Rated Operational Current (I_e) at 690 V (AC-23 A) | | A | 100 | 125 | 160 | 200 |
| Breaking Capacity - 436 V, AC-23 A | | A (rms) | 1000 | 1280 | 1600 | 2000 |
| Making Capacity - 436 V, AC-23 A | | A (rms) | 1250 | 1600 | 2000 | 2500 |
| Mechanical Endurance (Number of operating cycles) | | | 15,000 | 15,000 | 10,000 | 10,000 |
| Maximum Torque (On terminal bolt) | | Nm | 9.6 | 9.6 | 20 | 20 |
| Pollution Degree | | | III | III | III | III |
| Terminal Capacity | Main | Sq. mm | 95 | 185 | 240 | 240 |
| | Neutral | Sq. mm | 50 | 50 | 120 | 120 |
| Terminal Width | | | 20 | 25 | 30 | 30 |
| Terminal Thickness | | | 3 | 3 | 4 | 3 |
| Terminal Screw | | mm | M8 x 20 | M8 x 20 | M10 x 30 | M10 x 30 |
| Weight 3-Pole / 4-Pole | | kg | 3 / 3.3 | 3.2 / 3.65 | 4 / 4.7 | 5.2 / 6 |
| Rated Capacitor Power (415 V, 50/60 Hz) | | kVAr | 57 | 57 | 92 | 115 |
| DC Rating at 220 V DC | | | | | | |
| No. of Poles in Series, Utilization Category at Rated Current | | | 2, DC-23 A | 2, DC-23 A | 2, DC-23 A | 2, DC-22 A |
| Suitable E&A Fuse | | | | | | |
| DIN | Rated Fused Short circuit Current | kA | 100 | 100 | 100 | 100 |
| | Rating | A/Type/Size | 125/HN/00 & 000 | 160/HN/00 & 000 | 200/HN/0 | 250/HN/1 |
| Short circuit making Capacity (I_{cm}) | | A | 1250 | 1600 | 2000 | 2500 |
| Operating Torque | | Kg-m | 1.2 | 1.2 | 2 | 2 |
| Auxiliary Contacts no. of NO + NC (Accessories) | | | 2 | 2 | 2 | 2 |
| Overall Dimensions | W | mm | 251 | 251 | 299 | 299 |
| | H | mm | 187 | 187 | 231 | 231 |
| | D | mm | 180 + 36 | 180 + 36 | 216 + 31 | 216 + 31 |

Technical Data

| Frame Size | | Unit | V | V | VI | VI |
|---|-----------------------------------|-------------|-----------------------------------|------------|------------|-------------|
| Type Designation | | | FNX 315 | FNX 400 | FNX 630 | FNX 800 |
| Conformance to Standard | | | IEC 60947-3, IS/IEC 60947-3 | | | |
| No. of Poles | | | 3 Pole + Isolable Neutral, 4 Pole | | | |
| Thermal Current (I_{th}) at 40°C | | A | 315 | 400 | 630 | 800 |
| Conventional Enclosed Thermal Current (I_{the}) | | A | 315 | 400 | 630 | 800 |
| Ref. Ambient Temperature | | °C | 40 | 40 | 40 | 40 |
| Rated Insulation Voltage (U_i) | | V | 1000 | 1000 | 1000 | 1000 |
| Rated Operational Voltage (U_e) | | V | 415 | 415 | 415 | 415 |
| Rated Impulse withstand Voltage (U_{imp}) | | kV | 12 | 12 | 12 | 12 |
| Dielectric Strength | | kV | 6 | 10 | 10 | 10 |
| Rated Operational Current (I_e) at 415 V | | | | | | |
| AC-21 A Utilization Category | | A | 315 | 400 | 630 | 800 |
| AC-22 A Utilization Category | | A | 315 | 500 | 630 | 800 |
| AC-23 A Utilization Category | | A | 315 | 400 | 630 | 800 |
| Rated Operational Current (I_e) at 690 V (AC-23 A) | | A | 250 | 315 | 500 | 630 |
| Breaking Capacity - 436 V, AC-23 A | | A (rms) | 2520 | 3200 | 1600 | 6400 |
| Making Capacity - 436 V, AC-23 A | | A (rms) | 3150 | 4000 | 6300 | 8000 |
| Mechanical Endurance (Number of operating cycles) | | | 10,000 | 10,000 | 10,000 | 5000 |
| Maximum Torque (On terminal bolt) | | Nm | 20 | 27 | 45 | 45 |
| Pollution Degree | | | III | III | III | III |
| Terminal Capacity | Main | Sq. mm | 400 | 400 | 2 x 625 | 2 x 625 |
| | Neutral | Sq. mm | 240 | 240 | 400 | 400 |
| Terminal Width | | | 40 | 40 | 60 | 60 |
| Terminal Thickness | | | 3 | 5 | 6 | 8 |
| Terminal Screw | | mm | M10 x 30 | M12 x 40 | M16 x 50 | M16 x 50 |
| Weight 3-Pole / 4-Pole | | kg | 6.5 / 7.5 | 6.5 / 7.5 | 12.1 / 14 | 14.2 / 16.1 |
| Rated Capacitor Power (415 V, 50/60 Hz) | | kVAr | 145 | 175 | 270 | 270 |
| DC Rating at 220 V DC | | | | | | |
| No. of Poles in Series, Utilization Category at Rated Current | | | 2, DC-22 A | 2, DC-22 A | 2, DC-22 A | 2, DC-22 B |
| Suitable E&A Fuse | | | | | | |
| DIN | Rated Fused Short circuit Current | kA | 100 | 100 | 100 | 100 |
| | Rating | A/Type/Size | 315/HN/1 | 400/HN/2 | 630/HN/3 | 800/HN/3 |
| Short circuit making Capacity (I_{cm}) | | A | 3150 | 4000 | 6300 | 8000 |
| Operating Torque | | Kg-m | 2.5 | 2.5 | 2.5 | 2.8 |
| Auxiliary Contacts no. of NO + NC (Accessories) | | | 2 | 2 | 2 | 2 |
| Overall Dimensions | W | mm | 352 | 352 | 428 | 428 |
| | H | mm | 230 | 230 | 242 | 242 |
| | D | mm | 250 + 20 | 250 + 20 | 270 + 23 | 270 + 23 |

Ordering Information

Ordering Information of FNX S-D-F

| Type Designation | | FNX 32 | FNX 63 | FNX 100 | FNX 125 | FNX 160 |
|-----------------------|-----|---------|---------|---------|---------|---------|
| SDF Interiors : (DIN) | TPN | SK96903 | SK96904 | SK96906 | SK95806 | SK95807 |
| | 4P | SK96903 | SK96904 | SK96906 | SK95814 | SK95815 |

| Type Designation | | FNX 200 | FNX 250 | FNX 315 | FNX 400 | FNX 630 | FNX 800 |
|-----------------------|-----|---------|---------|---------|---------|---------|---------|
| SDF Interiors : (DIN) | TPN | SK95808 | SK95809 | SK95810 | SK95811 | SK95812 | SK95813 |
| | 4P | SK95816 | SK95817 | SK95818 | SK95819 | SK95820 | SK95821 |

Ordering suffix 0000 for all

Ordering Information of FNX S-D-F Spares & Accessories

| Description | Type | Cat. No. |
|-------------------------------------|---------------------------|----------|
| Auxiliary contacts (1 NO + 1 NC) | FNX 32 / 63 | SK91537 |
| | FNX 100 | SK91538 |
| | FNX 125 / 160 | SK91539 |
| | FNX 200 / 250 | SK91540 |
| | FNX 315 / 400 / 630 / 800 | SK91541 |
| Handle Assembly | FNX 32 / 63 / 100 | SK91524 |
| | FNX 125 / 160 / 200 / 250 | SK91525 |
| | FNX 315 / 400 / 630 / 800 | SK91526 |

| Description | Type | Cat. No. |
|-----------------------------|---------------------------|----------|
| DIN Rail Assembly | FNX 32 / 63 / 100 | SK91617 |
| Mechanical Interlock kit | FNX 125 / 160 / 200 / 250 | SK95232 |
| | FNX 315 / 400 / 630 / 800 | SK95545 |
| Fuse pulling handle | FNX 32 / 63 | SK91185 |
| | FNX 100 to FNX 800 | SK90126 |
| Castell Lock | FNX 32 / 63 / 100 | SK91530 |
| | FNX 125 / 160 / 200 / 250 | SK91531 |
| | FNX 315 / 400 / 630 / 800 | SK91531 |

Ordering suffix 0000 for all

Spares & Accessories

A wide range of spares and accessories are available for Switch-Disconnecter-Fuse units type FNX:

Extended terminal shroud

Terminals are shrouded for protection against phase to phase short circuit through an external conducting path and against accidental human contact with live terminals.

Mechanical interlock kit

Two Switch-Disconnecter-Fuse units can be interlocked by mechanical interlock kit. After interlocking, the following three positions are possible:

- SDF 1 in ON position SDF 2 in OFF position
- SDF 2 in ON position SDF 1 in OFF position
- Both SDFs in OFF position

Hence two mechanically interlocked SDFs can be used as a changeover switch.

Castell interlock

Switch-Disconnecter-Fuse units type FNX can be locked in OFF position with the help of Castell interlock.

Padlock

Switch-Disconnecter-Fuse units type FNX can be locked in OFF position with the help of the padlock. This can be done with or without defeating door interlock.

Auxiliary contacts

1NO + 1NC auxiliary contact is available as an accessory. This can be suitably wired in the control circuit with: (as per AC - 15)

- Rated operational current (I_e) - 4A
- Rated operational voltage (U_e) - 415V

Moving contacts

Moving contacts are available for range FNX 100 to FNX 800. One set of moving contact spare contains spring, guide and moving contact.

Fuse puller

A fuse puller facilitates safe removal of fuses.



Mechanical interlock kit



Castell interlock



Auxiliary contacts



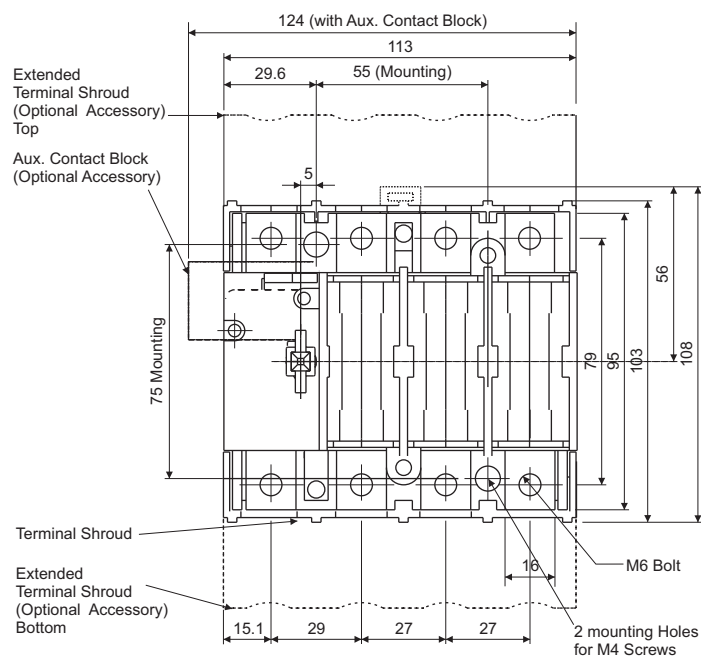
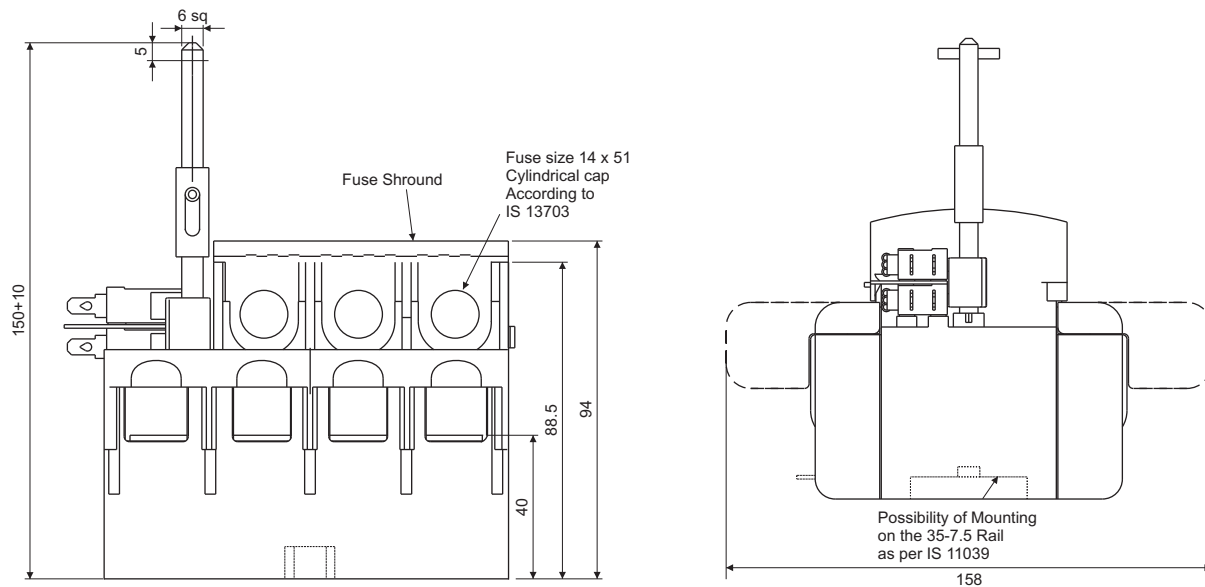
Padlock



Fuse puller

Overall Dimensions

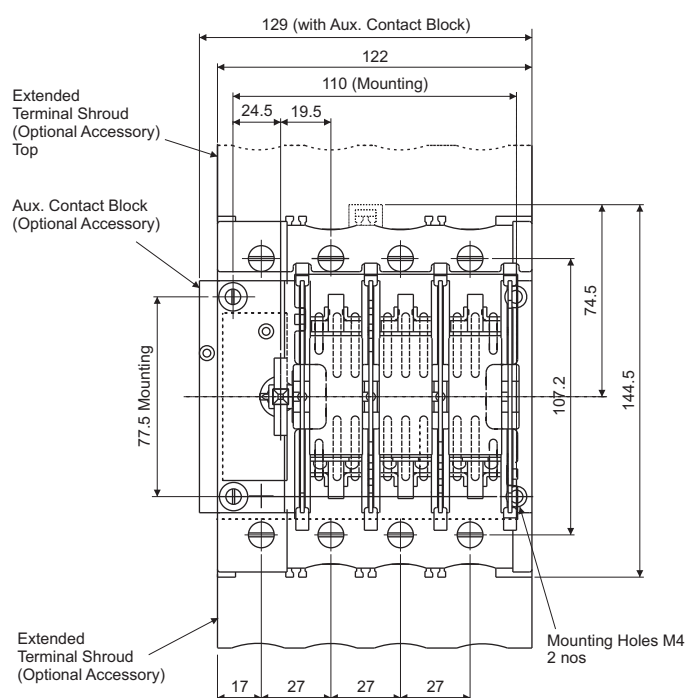
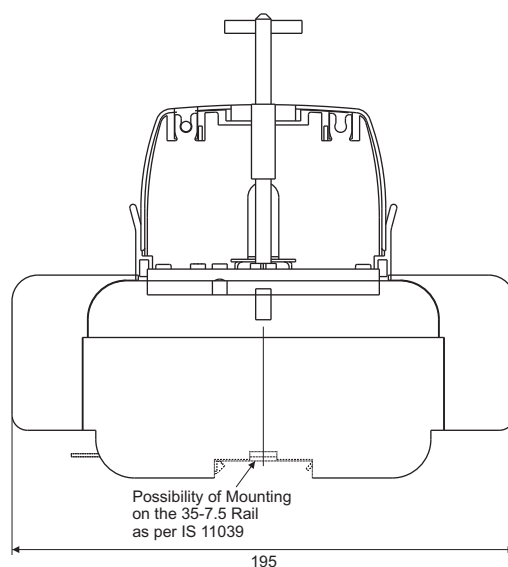
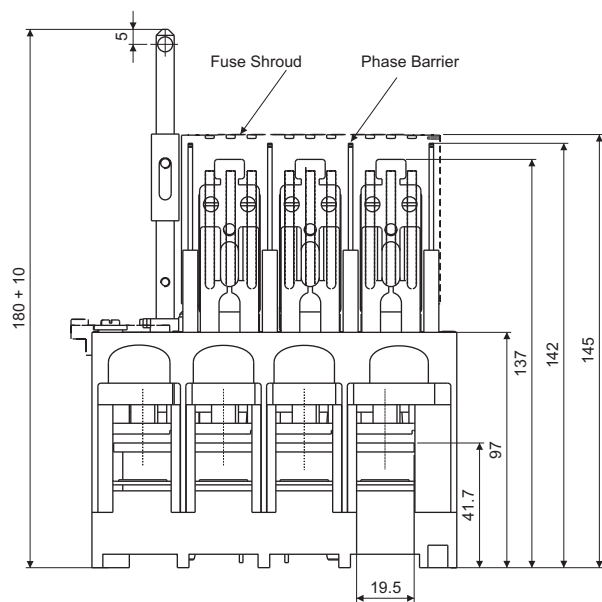
Type FNX 32 / FNX 63



Note : All dimensions are in mm

Overall Dimensions

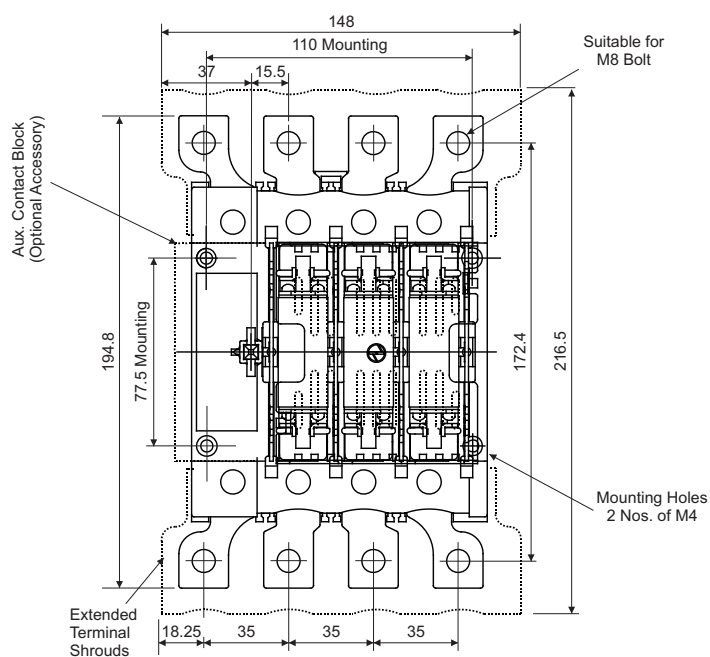
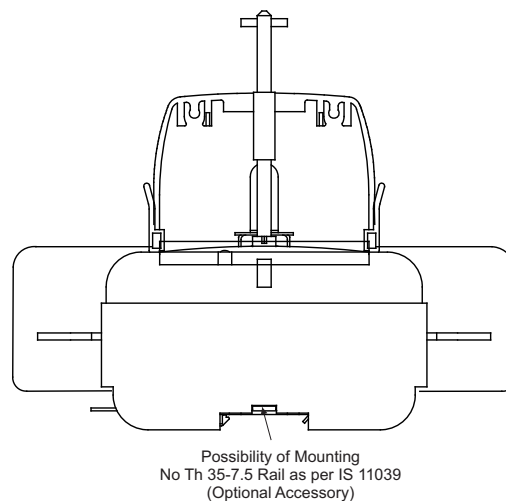
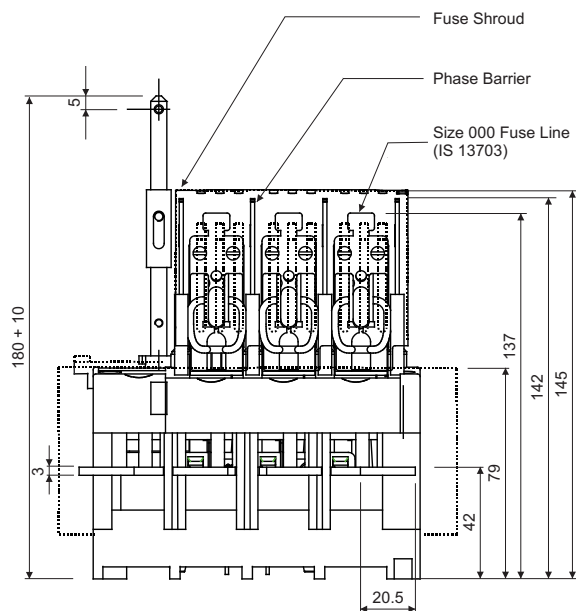
Type FNX 100



Note : All dimensions are in mm

Overall Dimensions

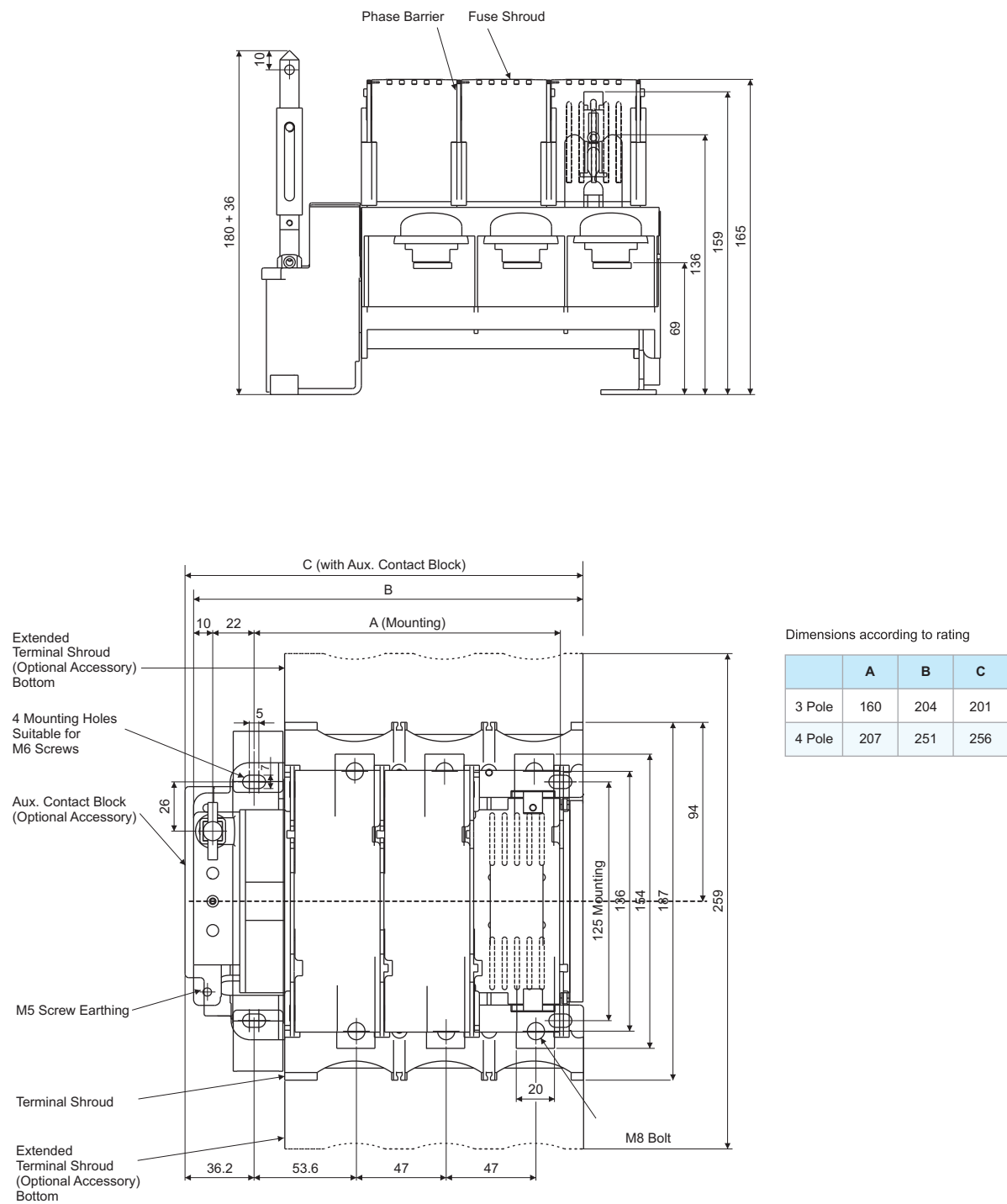
Type FNX 125C (with Extended Terminals)



Note : All dimensions are in mm

Overall Dimensions

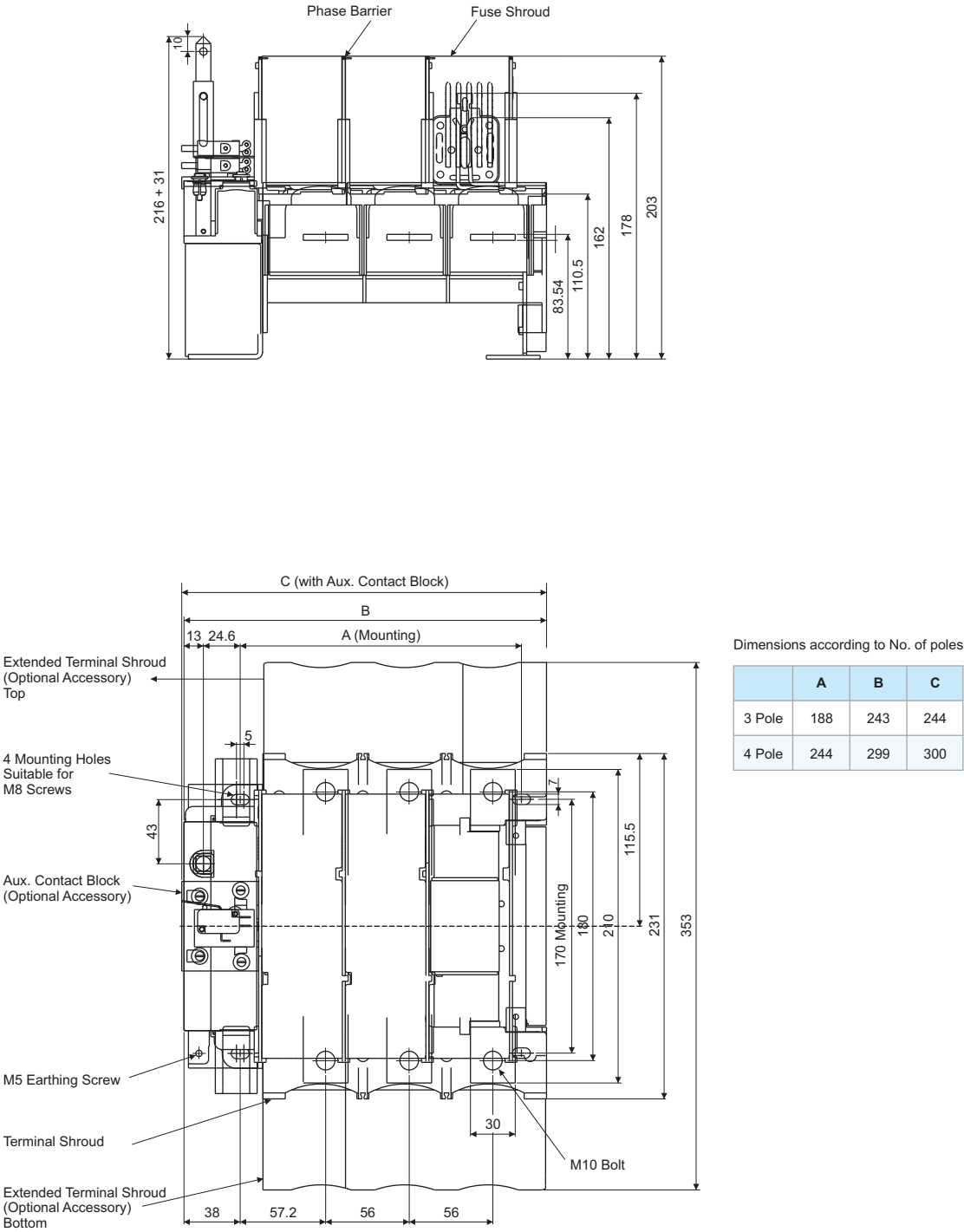
Type FNX 125 / FNX 160



Note : All dimensions are in mm

Overall Dimensions

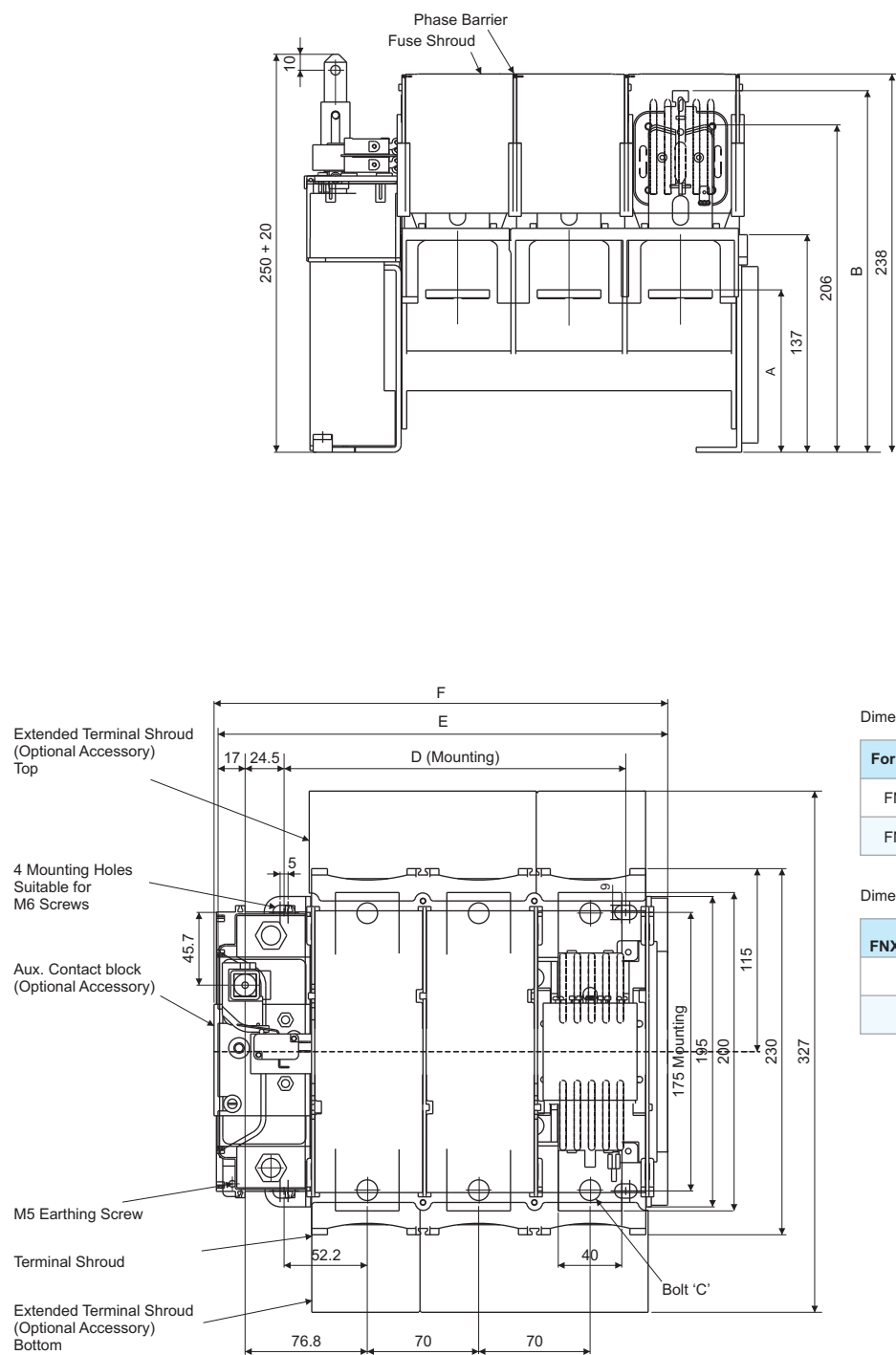
Type FNX 200 / FNX 250



Note : All dimensions are in mm

Overall Dimensions

Type FNX 315 / FNX 400



Dimensions according to rating

| For 3/4 Pole | A | B | C |
|--------------|-----|-----|-----|
| FNX 315 | 103 | 220 | M10 |
| FNX 400 | 102 | 228 | M12 |

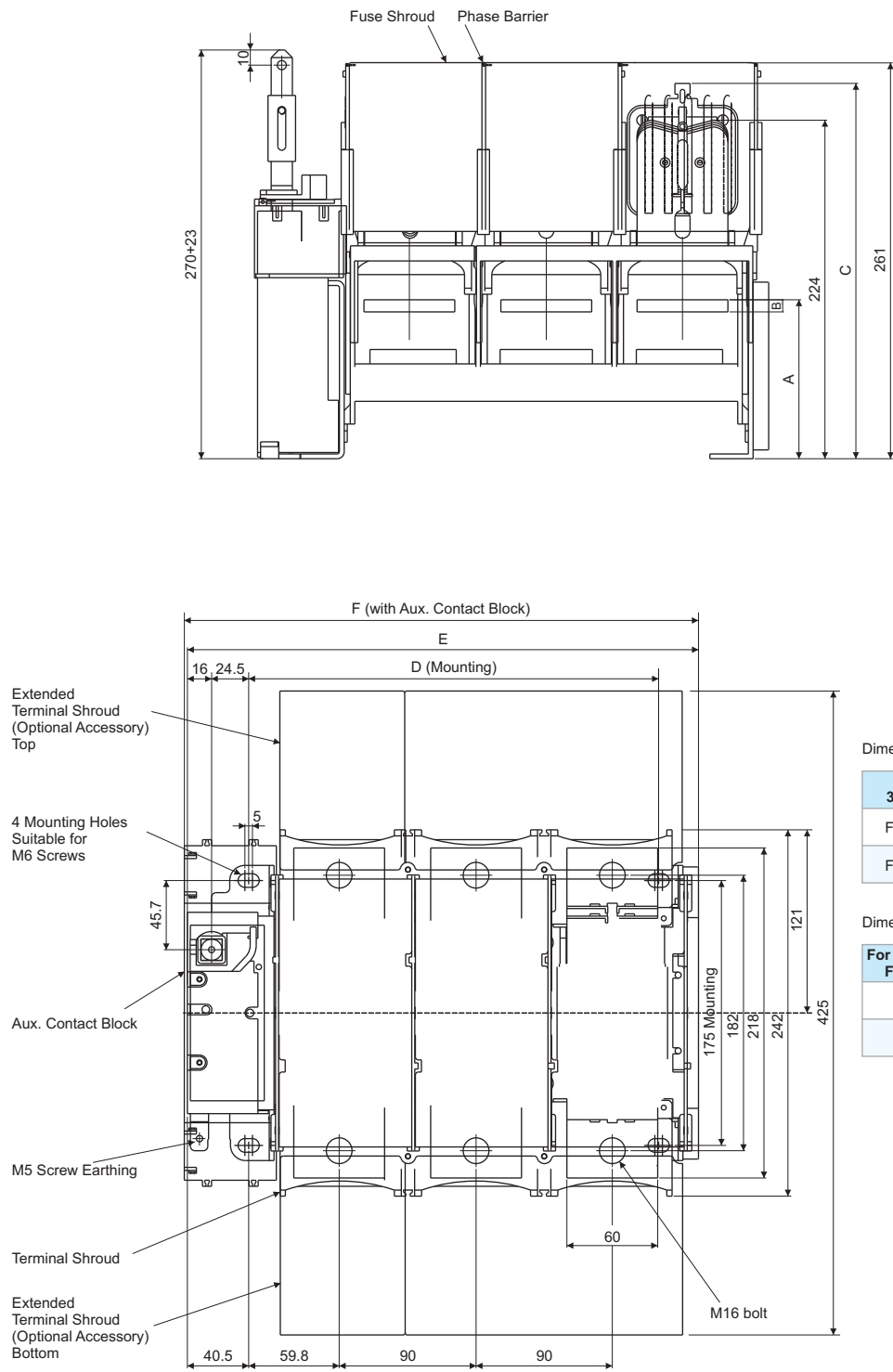
Dimensions according to No. of poles

| For FNX 315/FNX 400 | D | E | F |
|---------------------|-----|-----|-----|
| 3 Pole | 215 | 282 | 285 |
| 4 Pole | 285 | 352 | 355 |

Note : All dimensions are in mm

Overall Dimensions

Type FNX 630 / FNX 800



Dimensions according to rating

| For 3/4 Pole | A | B | C |
|--------------|-----|---|-------|
| FNX 630 | 103 | 6 | 249 |
| FNX 800 | 105 | 8 | 250.5 |

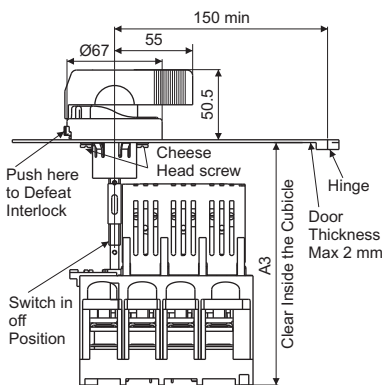
Dimensions according to No. of poles

| For FNX 630 / FNX 800 | D | E | F |
|-----------------------|-----|-----|-----|
| 3 Pole | 271 | 338 | 340 |
| 4 Pole | 361 | 428 | 430 |

Note : All dimensions are in mm

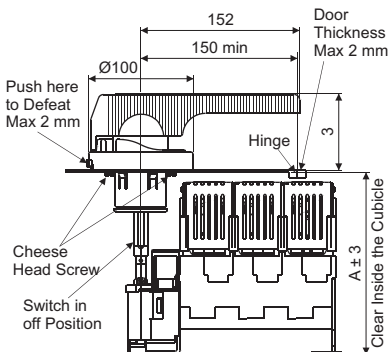
Installation Details

Assembly of handle coupling on door FNX 32 / 63 / 100



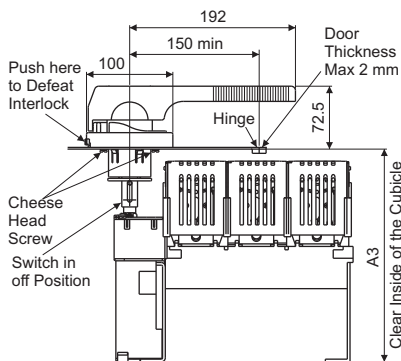
| DIM | FNX 32 / FNX 63 | FNX 100 |
|-----|-----------------|----------|
| A | 150 + 10 | 180 + 10 |

Assembly of handle coupling on door FNX 125 / 160 / 200 / 250



| DIM | FNX 125 / FNX 160 | FNX 200 / FNX 250 |
|-----|-------------------|-------------------|
| A | 180 + 36 | 216 + 31 |

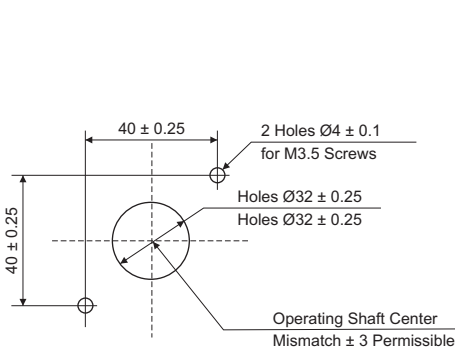
Assembly of handle coupling on door FNX 315 / 400 / 630 / 800



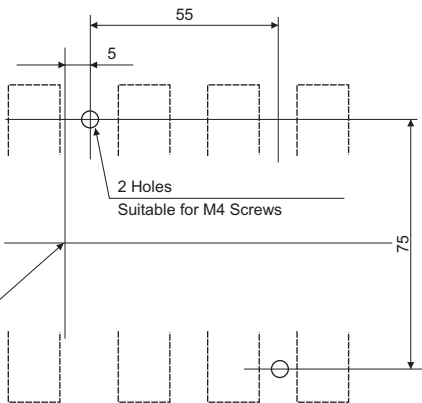
| DIM | FNX 135 / FNX 400 | FNX 630 / FNX 800 |
|-----|-------------------|-------------------|
| A | 250 + 20 | 270 + 23 |

Drilling details for FNX 32 / FNX 63

Drilling details on door
for mounting handle coupling
As seen from front side of the door



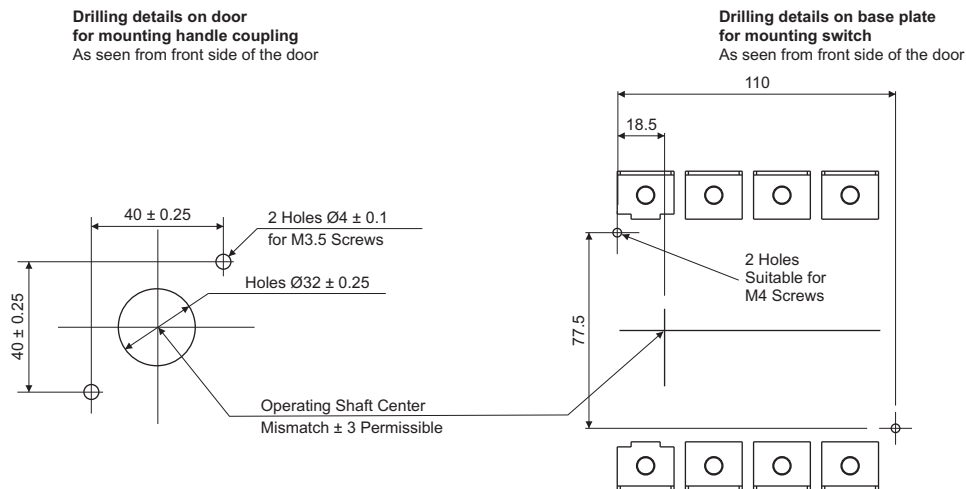
Drilling details on base plate
for mounting switch
As seen from front side of the door



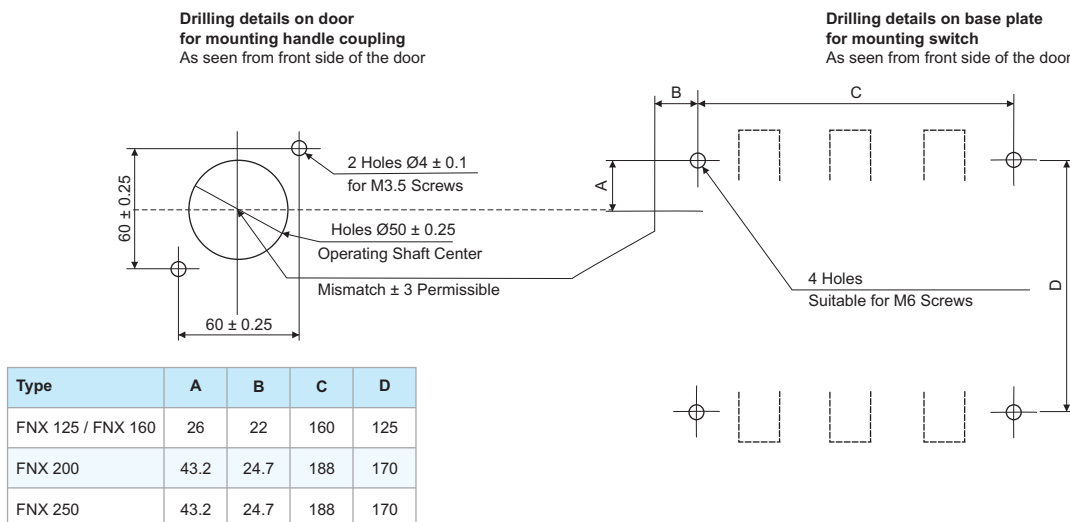
Note : All dimensions are in mm

Installation Details

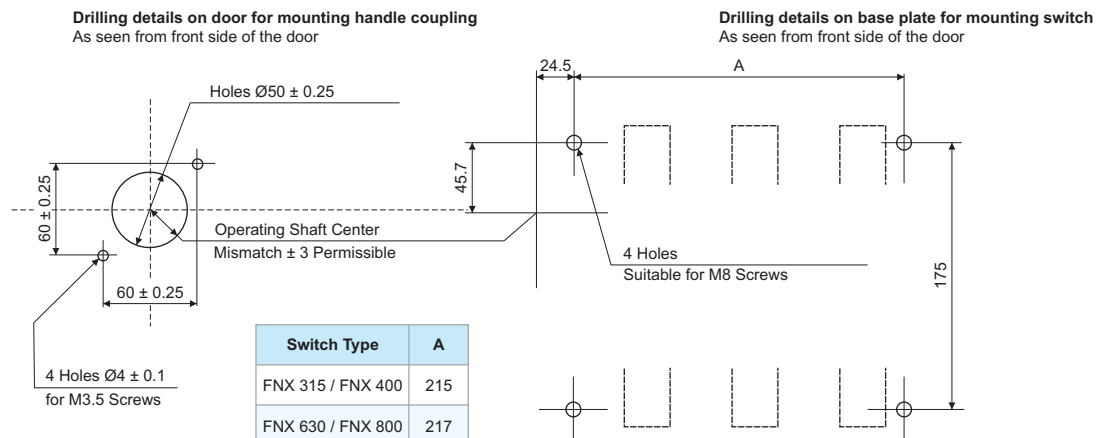
Drilling details for FNX 100



Drilling details for FNX 125 / FNX 160 / FNX 200 / FNX 250



Drilling details for FNX 315 / FNX 400 / FNX 630 / FNX 800



Note : All dimensions are in mm

HRC Fuses - Cylindrical

Fuse Links Type HF

(Fuse links with cylindrical contact caps)

- Conforms to IEC60269 / IS13703
- Low watt loss - Saves power
- Low let through energy
- High breaking capacity - 80 kA
- Rated voltage - 415 V
- Immediate fault indication through red pop up indicator
- Lower power loss in our fuses result in cooler running of associated products



Ordering Details

| Size | Fuse Rating (A) | Cat. Nos. | Rated watt loss |
|---------|-----------------|-----------|-----------------|
| 14 x 51 | 2 | SF90144 | 0.6 |
| | 4 | SF90145 | 0.6 |
| | 6 | SF90146 | 1.1 |
| | 8 | SF90147 | 1.2 |
| | 10 | SF90148 | 1.0 |
| | 16 | SF90150 | 2.4 |
| | 20 | SF90151 | 2.4 |
| | 25 | SF90152 | 3.2 |
| | 32 | SF90142 | 5.0 |
| | 40 | SF90143 | 5.0 |
| | 50 | SF90158 | 5.0 |
| | 63 | SF90159 | 7.4 |

Fuse-pulling handle should be used for safe and easy removal of fuse links
Suitable fuse - pulling handle for type HF : SK91185

HRC Fuses - Blade / Knife type

Fuse Links Type HN

(Fuse links with blade contacts)

- Conforms to IEC60269 / IS13703
- Low watt loss - Saves power
- Cooler running of associated products
- Low let through energy
- High breaking capacity - 100 kA
- Immediate fault indication
- Rated voltage - 415 V



| Size of the fuse link | Rating (A) | Cat. Nos. | Rated watt loss | Watt loss limits as per IS 13703 |
|-----------------------|------------|-----------|-----------------|----------------------------------|
| Size 000 | 63 | SF94940 | 5.3 | 100 Amp, Fuse-7.5 W |
| | 80 | SF94941 | 6.2 | |
| | 100 | SF94942 | 7 | |
| | New 125 | SF94946 | 9.5 | |
| Size 00 | 63 | SF94027 | 5.7 | 100 Amp, Fuse-7.5 W |
| | 80 | SF94028 | 6.9 | |
| | 100 | SF94029 | 7.5 | |
| | 125 | SF94030 | 9.8 | |
| | 160 | SF94939 | 12 | |
| Size 0 | 80 | SF94128 | 8.3 | 160 Amp, Fuse-16 W |
| | 100 | SF94129 | 9.1 | |
| | 125 | SF94130 | 11.3 | |
| | 160 | SF94131 | 12.7 | |
| | 200 | SF94132 | 14.5 | |
| Size 1 | 125 | SF94230 | 10.3 | 250 Amp, Fuse-23 W |
| | 160 | SF94231 | 12.3 | |
| | 200 | SF94232 | 14.3 | |
| | 250 | SF94233 | 17.3 | |
| | 315 | SF94234 | 25.5 | |
| Size 2 | 200 | SF94332 | 14.1 | 400 Amp, Fuse-34 W |
| | 250 | SF94333 | 16.9 | |
| | 315 | SF94334 | 20.2 | |
| | 400 | SF94335 | 24.9 | |
| Size 3 | 315 | SF94434 | 20.5 | 630 Amp, Fuse-48 W |
| | 400 | SF94435 | 26.7 | |
| | 500 | SF94436 | 36.1 | |
| | 630 | SF94437 | 42.2 | |
| | 800 | SF94938 | 48 | |

Fuse-pulling handle should be used for safe and easy removal of fuse links
 Suitable fuse - pulling handle for type HN : SF90126

Notes:

Electrical Standard Products (ESP) Offices:

HEAD OFFICE

L&T Electrical & Automation
L&T Business Park,
Tower 'B' / 3rd Floor
Saki Vihar Road, Powai
Mumbai 400 072
Tel: 022-67053229
Fax: 022-67051112
e-mail: cic@LNTEBG.com

BRANCH OFFICES

L&T Electrical & Automation
501, Sakar Complex I
Opp. Gandhigram Rly. Station
Ashram Road
Ahmedabad 380 009
Tel: 079-66304006-11
Fax: 079-66304025
e-mail: esp-ahm@LNTEBG.com

L&T Electrical & Automation
M/s Larsen & Toubro Ltd
No 38, Cubbon Road
Bengaluru 560 001
Tel: 080-46136103 / 100
e-mail: esp-blr@LNTEBG.com

L&T Electrical & Automation
131/1, Zone II, Maharana Pratap Nagar
Bhopal 462 011
Tel: 0755-3080511 / 05 / 08 / 13 / 17 / 19
Fax: 0755-3080502
e-mail: esp-bho@LNTEBG.com

L&T Electrical & Automation
Plot No. 559, Annapurna Complex
Lewis Road
Bhubaneswar 751 014
Tel: 0674-6451342 / 2436690 / 2436696
Fax: 0674-2537309
e-mail: esp-bsr@LNTEBG.com

L&T Electrical & Automation
Aspire Towers, 4th Floor
Plot No. 55, Phase-I
Industrial & Business Park
Chandigarh 160 002
Tel: 0172-4646840 / 41 / 42 / 46 / 53
Fax: 0172-4646802
Email: esp-chd@LNTEBG.com

L&T Electrical & Automation
L&T Construction Campus
TC-1 Building, II Floor
Mount-Poonamallee Road
Manapakkam
Chennai 600 089
Tel: 044-2270 6800
Fax: 044-2270 6940
e-mail: esp-maa1@LNTEBG.com

L&T Electrical & Automation
67, Appuswamy Road, Post Bag 7156
Opp. Nirmala College
Coimbatore 641 045
Tel: 0422-4588120 / 1 / 5
Fax: 0422-2588148
e-mail: esp-cbe@LNTEBG.com

L&T Electrical & Automation
1&2, Vijay Park, Main Chakrata road
Opp: Anandam, Ballapur Chowk
Dehradun 248001
Tel: 9582252411

L&T Electrical & Automation
Khairasol, Degaul Avenue
Durgapur 713 212
Tel: 0343-2540448 / 2540449 / 2540443
Fax: 0343-2540442
e-mail: esp-dgp@LNTEBG.com

L&T Electrical & Automation
5, Milanpur Road, Bamuni Maidan
Guwahati 781 021
Tel: +91 8876554417
e-mail: esp-ghy@LNTEBG.com

L&T Electrical & Automation
II Floor, Vasantha Chambers
5-10-173, Fateh Maidan Road
Hyderabad 500 004
Tel: 040-67015052
Fax: 040-23296468
e-mail: esp-hyd@LNTEBG.com

L&T Electrical & Automation
Monarch Building, 1st Floor
D-236 & 237, Amrapali Marg
VaiShali Nagar
Jaipur 302 021
Tel: 0141-4385914 to 18
Fax: 0141-4385925
e-mail: esp-jai@LNTEBG.com

L&T Electrical & Automation
Akashdeep Plaza, 2nd Floor
P. O. Golmuri
Jamshedpur 831 003
Jharkhand
Tel: 0657-2312205 / 38
Fax: 0657-2341250
e-mail: esp-jam@LNTEBG.com

L&T Electrical & Automation
Skybright Bldg; M. G. Road
Ravipuram Junction, Ernakulam
Kochi 682 016
Tel: 0484-4409420 / 4 / 5 / 7
Fax: 0484-4409426
e-mail: esp-cok@LNTEBG.com

L&T Electrical & Automation
3-B, Shakespeare Sarani
Kolkata 700 071
Tel: 033-42005982
Fax: 033-22821025 / 7587
e-mail: esp-ccu@LNTEBG.com

L&T Electrical & Automation
No. 10, Fortuna Tower, 2nd Floor
Rana Pratap Marg, Near NBRI
Lucknow 226001
e-mail: esp-lko@LNTEBG.com

L&T Electrical & Automation
No: 73, Karpaga Nagar, 8th Street
K. Pudur
Madurai 625007
Tel: 0452-2567405 / 2561068 / 2561657
Fax: 0452-2567552
e-mail: esp-mdu@LNTEBG.com

L&T Electrical & Automation
L&T Business Park, Tower 'B' / 3rd Floor
Saki Vihar Road, Powai
Mumbai 400 072
Tel: 022-67052874 / 2737 / 1156
Fax: 022-67051112
e-mail: esp-bom@LNTEBG.com

L&T Electrical & Automation
Unnati Building, 2nd Floor
Automation Campus
A-600, TTC Industrial area
Shil-Mahape road, Mahape
Navi Mumbai 400710

L&T Electrical & Automation
12, Shivaji Nagar
North Ambajhari Road
Nagpur 440 010
Tel: 0712-2260012 / 6606421
Fax: 2260030 / 6606434
e-mail: esp-nag@LNTEBG.com

L&T Electrical & Automation
32, Shivaji Marg
P. O. Box 6223
New Delhi 110 015
Tel: 011-41419514 / 5 / 6
Fax: 011-41419600
e-mail: esp-del@LNTEBG.com

L&T Electrical & Automation
Grand Chandra, 2nd Floor
Fraser Road
Opposite Doordarshan Kendra
Patna 800001
Tel: 8102440613
e-mail: esp-patna@LNTEBG.com

L&T Electrical & Automation
L&T House
P. O. Box 119
191/1, Dhole Patil Road
Pune 411 001
Tel: 020-48544395 / 48544279
e-mail: esp-pnq@LNTEBG.com

L&T Electrical & Automation
Crystal Tower,
4th Floor, G. E. Road
Telibandha
Raipur 492 006
Tel: 0771-4283214
e-mail: esp-raipur@LNTEBG.com

L&T Electrical & Automation
3rd Floor
Vishwakarma Chambers
Majura Gate, Ring Road
Surat 395 002
Tel: 0261-2473726
Fax: 0261-2477078
e-mail: esp-sur@LNTEBG.com

L&T Electrical & Automation
Radhadaya Complex
Old Padra Road
Near Charotar Society
Vadodara 390 007
Tel: 0265-6613610 / 1 / 2
Fax: 0265-2336184
e-mail: esp-bar@LNTEBG.com

L&T Electrical & Automation
Door No. 49-38-14/3/2, 1st floor,
NGO's Colony, Akkayyapalem,
Visakhapatnam 530 016
Tel: 0891-2791126 / 2711125
Fax: 0891-2791100
e-mail: esp-viz@LNTEBG.com

Product improvement is a continuous process. For the latest information and special application, please contact any of our offices listed here.
Product photographs shown for representative purpose only.



L&T Electrical & Automation, Electrical Standard Products

L&T Business Park, TC-2, Tower B, 3rd Floor, Gate No. 5, Saki Vihar Road, Powai,
Mumbai - 400 072, INDIA www.Lntebg.com

Customer Interaction Center (CIC)

BSNL / MTNL (toll-free): 1800 233 5858 Reliance (toll-free): 1800 200 5858
Tel: 022 6774 5858 Email: cic@Lntebg.com Web: www.Lntebg.com