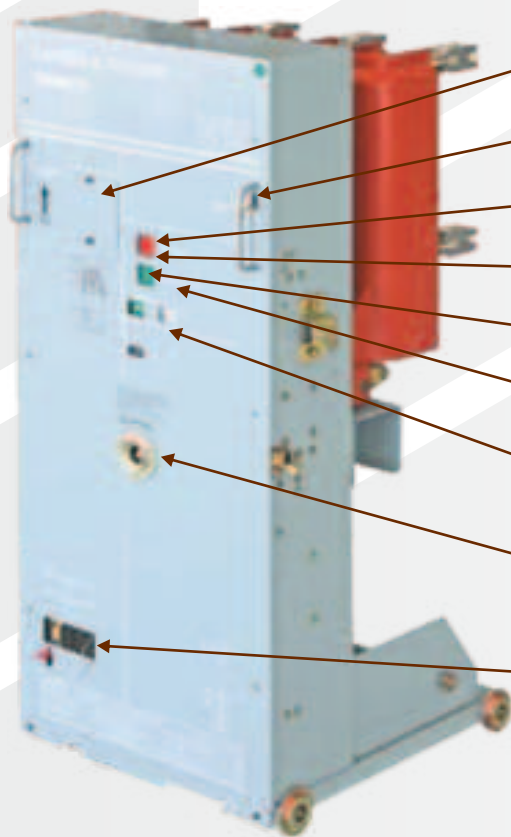


VCB Subcubicle



VCB Subcubicle (Trolley Type)



Window for Manual Spring Charging

Handle

Manual Trip Push Button

Manual Close Push Button

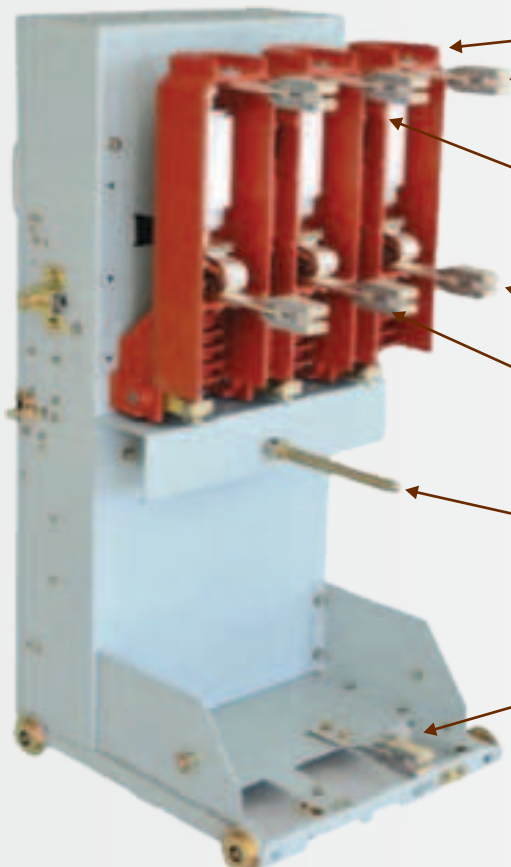
Breaker Position Indicator

Spring Charge / Discharge Indicator

Mechanical Counter

Insert racking handle here

Socket for Secondary Disconnecting Switch



Epoxy Housing

Upper Contact Jaw

Vacuum Interrupter

Lower Contact Jaw

Insulators

Racking Screw

Contact Jaw for Earthing

Subcubicle Characteristics

Model No.		VK 10
Variant	A	630 / 800 / 1250
Rated Voltage	kV	12
Rated Current	A	630 / 800 / 1250
Rated Frequency	Hz	50 / 60
Rated Short Time Withstand Current	kA / 3 sec	26.3
Rated Short Circuit making current	kAp	65.75
Rated Short Circuit Breaking Current	kA	26.3
Rated Impulse Withstand Voltage	kVp	75
Rated 1 min Power Frequency Withstand Voltage	kV	28
Rated Operating Sequence		O-0.3 sec-CO-3 min-CO
Break Time	No. of Cycles	<3 Cycles
Closing Voltage	V	24 / 30 / 110 / 220 V DC
Tripping Voltage*	V	24 / 30 / 110 / 220 V DC
Spring Charging Motor Voltage	V	230 V AC / 110 V AC / 110 V DC / 220 V DC
Auxiliary Contacts	Nos.	6NO + 6NC
Full Load Switching Life	No. of operations	>10000

*Dual trip coil available

Dimensions

Width (mm)	600
Depth (mm)	977
Height (mm)	1584



General

- Complies with IEC 62271-100
- Compact and robust metal clad switchgear
- Comes with inbuilt Anti-pumping feature
- Horizontal Isolation, horizontal draw-out VCB with Interchangeability for same current rating
- Superior powder coated finish with advance pre-treatment process



Customer Benefits

- Minimum maintenance - Superior performance
- Floor Rolling Trolley type design
- Suitable for adverse environmental condition
- Easy installation
- Provision of both Manual and Electrical Spring charging facility in VCB
- Earth Switch & Earthing Truck facility can be provided



Standard Accessories

- VCB Racking Handle
- Emergency Manual Tripping/Closing handle
- Manual Spring Charging Handle



Safety

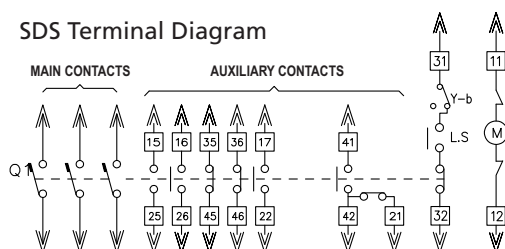
- True close door operation as per IEC 62271-200
- Pad lockable door to ensure operator safety
- Safety interlocks
- VCB Rack in & Rack out operation is not possible unless it is OFF.
- VCB can be closed only when it is in the service or test position.
- VCB operation is not possible while it is in the intermediate position.
- VCB cannot be racked in unless the control plug (SDS) is inserted.
- Control plug cannot be removed while VCB is in service or intermediate position.
- Control plug can be removed when VCB is in Test position.
- VCB can be fully withdrawn out of its compartment only when the control plug is removed.
- VCB cannot be operated unless spring is fully charged.
- Door cannot be opened while VCB is in Service / Intermediate position.
- Door can be opened only if VCB is in Test position.
- Provided Bypassing arrangement to open the door in Service / Intermediate Position during emergency.

Sample GA

Subcubicle Details

SYSTEM DETAILS	11kV, 3PH, 3W, 50Hz, 26.3kA/3 Sec
VCB RATING	630 / 800 A
DEGREE OF PROTECTION	IP4X
TOTAL LENGTH	600
PAIN T SHADE	EXT. RAL 7032 (PEBBLE GREY) WITH GLOSSY FINISH INT. RAL 7032 (PEBBLE GREY) WITH GLOSSY FINISH
RECOMMENDED FRONT ACCESS	2000
RECOMMENDED REAR ACCESS	1000
DEGREE OF PROTECTION	550
RECOMMENDED TOP ACCESS	660

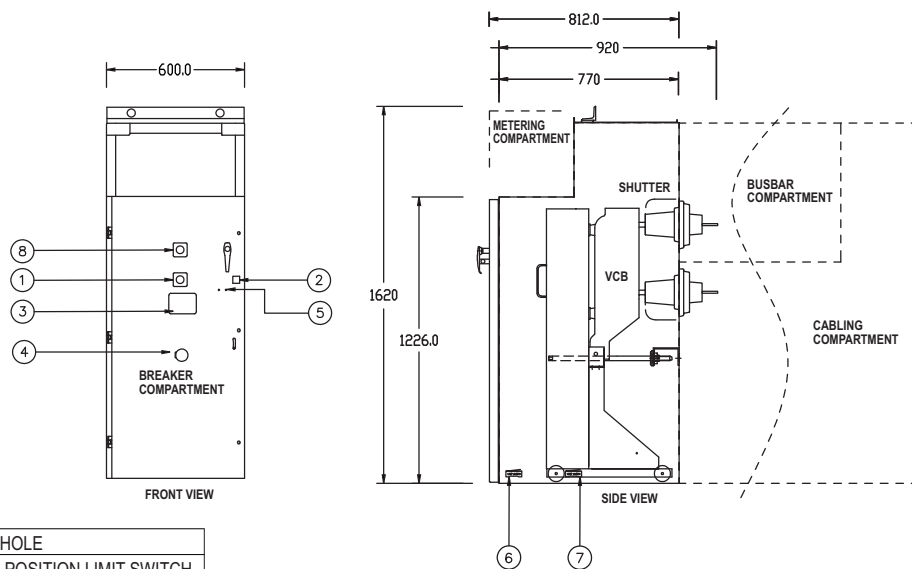
SDS Terminal Diagram



General Details

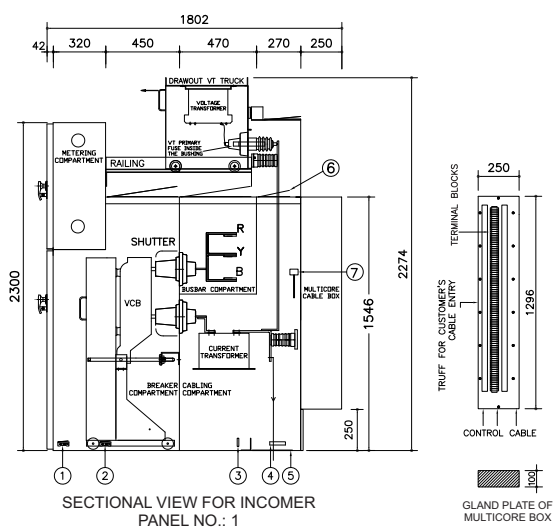
- 1) INSULATION LEVEL : 12kV/28kV RMS (1MIN.)/75KVp
- 2) SP. CH. MOTOR SUPPLY : 230V AC
- 3) CLOSING COIL SUPPLY : 24V DC
- 4) TRIP COIL SUPPLY : 24V DC
- 5) BOARD LABEL IS OF ANODISED ALUMINIUM WITH ENGRAVED LETTERS WHITE ON BLACK BACKGROUND.
- 6) BREAKER SDS PIN DESCRIPTION IS AS FOLLOWS:

15	}	VCB NO CONTACT
25		
16		
26	}	VCB NO CONTACT
35		
45		
36	}	VCB NC CONTACT
46		
17		
22	}	SP. CHARGING L/SW
41		
42		
21	}	TRIP COIL
31		
32		
11	}	CLOSING COIL
12		
	}	SPRING CHARGING MOTOR



⑧	MANUAL TRIPPING HOLE
⑦	BREAKER SERVICE POSITION LIMIT SWITCH
⑥	BREAKER TEST POSITION LIMIT SWITCH
⑤	DOOR BYPASS INTERLOCK
④	SOCKET FOR VCB RACKING HANDLE
③	VIEWING WINDOW
②	VCB POSITION INDICATOR
①	MANUAL CLOSING HOLE

Typical View of Panel with VCB Subcubicle



⑦	THERMOSTAT
⑥	PRESSURE RELIEF FLAP
⑤	GLAND PLATE
④	PANEL SPACE HEATER
③	EARTH BAR
②	VCB SERVICE POSITION LIMIT SWITCH
①	VCB TEST POSITION LIMIT SWITCH

Product improvement is a continuous process. For the latest information and special applications, please contact any of our offices listed here. Product photographs shown for representative purpose only.



L&T Electrical & Automation, Electrical Standard Products

L&T Business Park, TC-2, Tower B, 3rd Floor, Gate No. 5, Saki Vihar Road, Powai, Mumbai - 400 072, INDIA www.Lntebg.com

Customer Interaction Center (CIC)

BSNL / MTNL (toll-free): 1800 233 5858 Reliance (toll-free): 1800 200 5858
Tel: 022 6774 5858 Email: cic@Lntebg.com Web: www.Lntebg.com